



MEADOWLEAF

RESIDENCE **three**

4 Bedrooms
2.75 Bathrooms
2-Car Garage
3,059 sq. ft.



RESIDENCE **three**

3,059 sq.ft.

4 Bedrooms

2.75 Bathrooms

2-Car Garage

- + Loft
- + Mudroom
- + Covered Patio

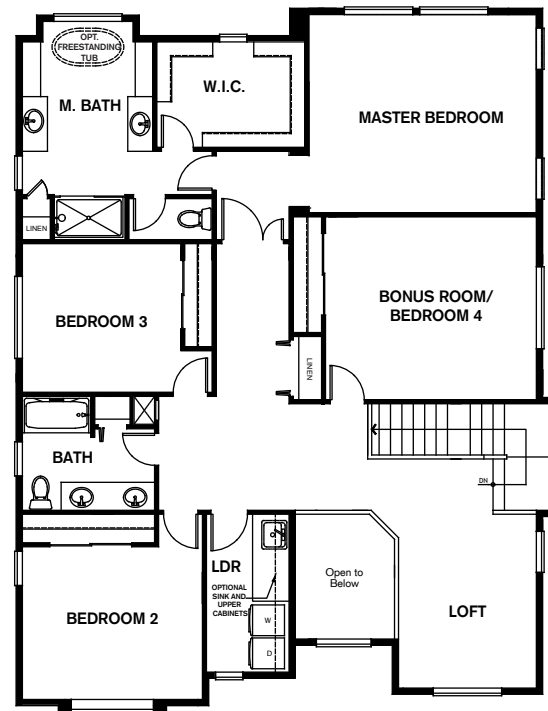
- + Kitchen Nook
- + Pantry
- + Den/Opt. Bedroom 5

Note: Windows, porches, and walls may vary due to exterior elevations. See agent for specific details.

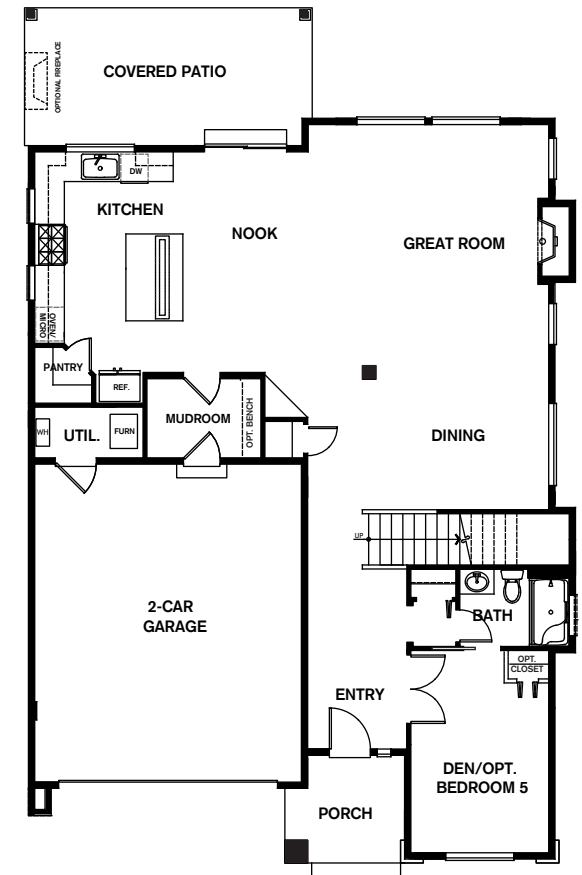
Optional Floorplan Features

- Freestanding Tub in Master Bath
- Laundry Room Sink
- Laundry Room Upper Cabinets
- Closet in Den
- Mudroom Bench
- Outdoor Fireplace

upper FLOORPLAN



main FLOORPLAN



Conner Homes reserves the right to make any modifications in price, materials, specifications, plans and designs without prior notice. Plans and elevations are artist's concept and not to scale. Ceiling heights, room sizes, window locations, bay windows, alcoves and dormers may change with each elevation. Square footages are estimates and are not warranted by the seller. For clarification and additional information, please consult our Sales Representative. (4033) 8.8.19