

MERISTONE MAPLE



Conner Homes reserves the right to make any modifications in price, materials, specifications, plans and designs without prior notice. Plans and elevations are artist's concept and not to scale. Ceiling heights, room sizes, window locations, bay windows, alcoves and dormers may change with each elevation. Square footages are estimates and are not warranted by the seller. For clarification and additional information, please consult our Sales Representative. (2540) 5.27.25



MERISTONE MAPLE

4-5 Bedrooms | 2.75 Bathrooms | 2-Car Garage | 2,540 Sq. Ft.

- +

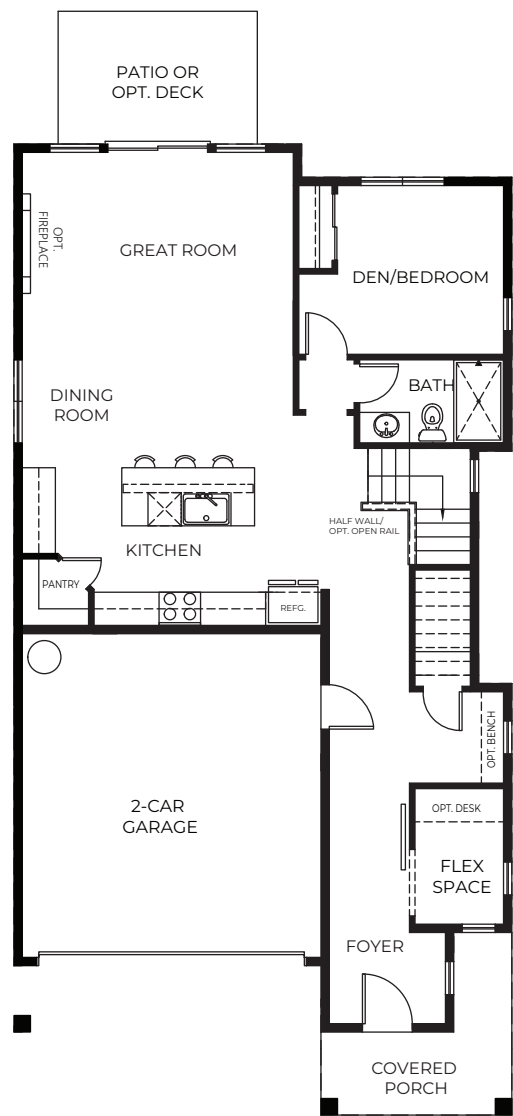
 Bonus Room
- +

 Covered Porch
- +

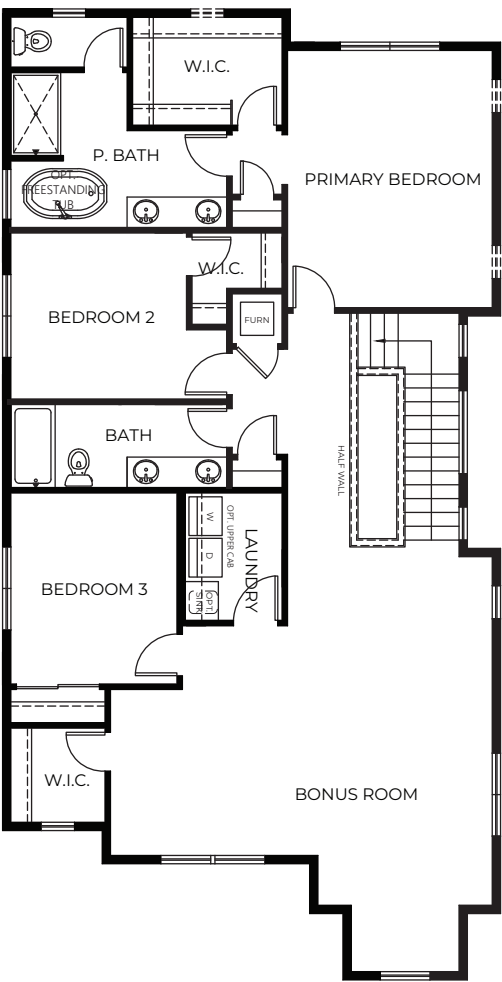
 Pantry
- +

 Patio or Opt. Deck

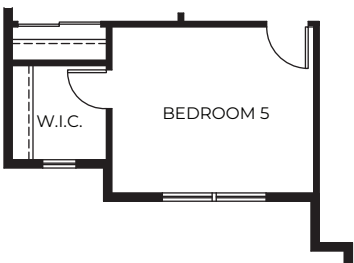
MAIN FLOORPLAN



UPPER FLOORPLAN



OPTIONAL BEDROOM 5



Note: Windows, porches, and walls may vary due to exterior elevations. Customers may upgrade to wood or composite decks in lieu of patios. Please see agent for details.



Conner Homes reserves the right to make any modifications in price, materials, specifications, plans and designs without prior notice. Plans and elevations are artist's concept and not to scale. Ceiling heights, room sizes, window locations, bay windows, alcoves and dormers may change with each elevation. Square footages are estimates and are not warranted by the seller. For clarification and additional information, please consult our Sales Representative. (2540) 6.9.25

