

# MAPLE HIGHLANDS Alderwood

5 Bedrooms | 3 Bathrooms | 2-Car Garage | 3,476 Sq. Ft.

- + Bonus Room
- + Walk-In Pantry

- + Pocket Office
- + Flex Room



Conner Homes reserves the right to make any modifications in price, materials, specifications, plans and designs without prior notice. Plans and elevations are artist's concept and not to scale. Ceiling heights, room sizes, window locations, bay windows, alcoves and dormers may change with each elevation. Square footages are estimates and are not warranted by the seller. For clarification and additional information, please consult our Sales Representative. (356) 2.27.26

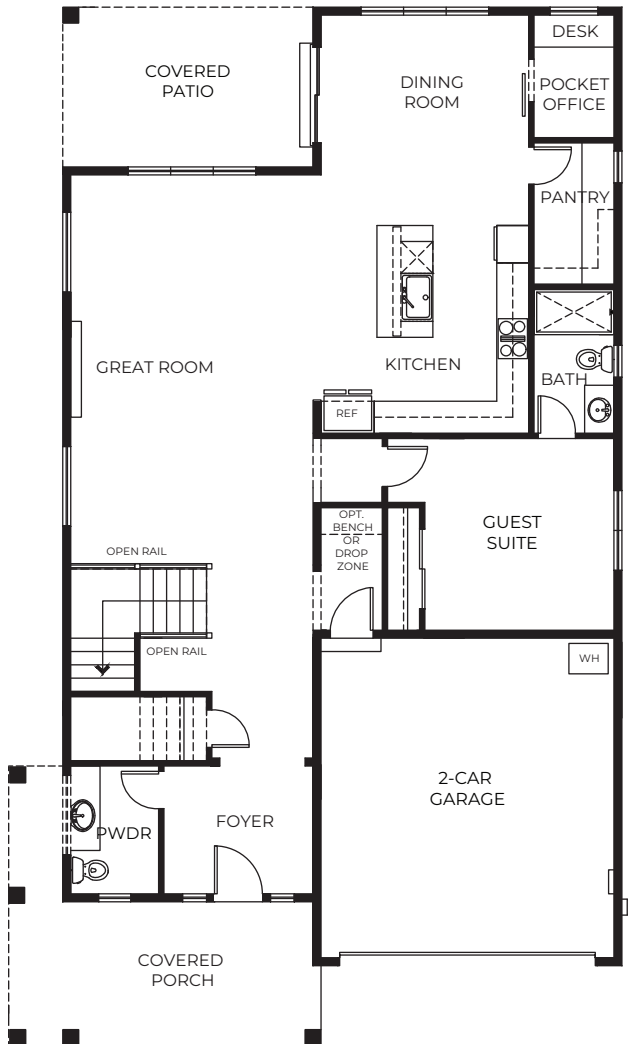


# MAPLE HIGHLANDS Alderwood

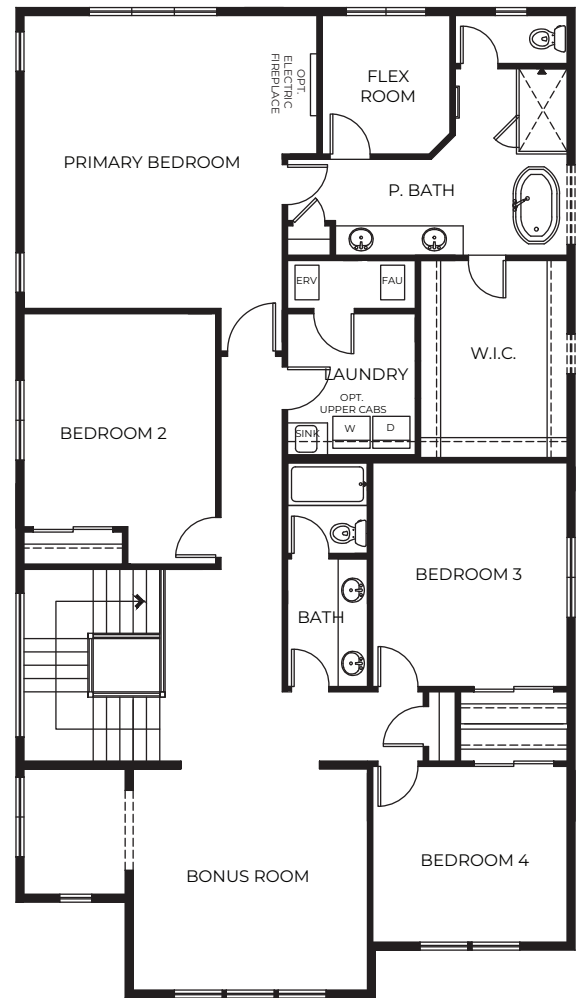
5 Bedrooms | 3 Bathrooms | 2-Car Garage | 3,476 Sq. Ft.

- ✦ Bonus Room
- ✦ Walk-In Pantry
- ✦ Pocket Office
- ✦ Flex Room

## MAIN FLOORPLAN



## UPPER FLOORPLAN



Note: Windows, porches, and wall details may vary by exterior elevation and specific homesite. Please see sales agent for complete details.



Conner Homes reserves the right to make any modifications in price, materials, specifications, plans and designs without prior notice. Plans and elevations are artist's concept and not to scale. Ceiling heights, room sizes, window locations, bay windows, alcoves and dormers may change with each elevation. Square footages are estimates and are not warranted by the seller. For clarification and additional information, please consult our Sales Representative. (3560) 2.27.26

