

ELEVATION A

RESIDENCE 9

# Perkins

PRAIRIE

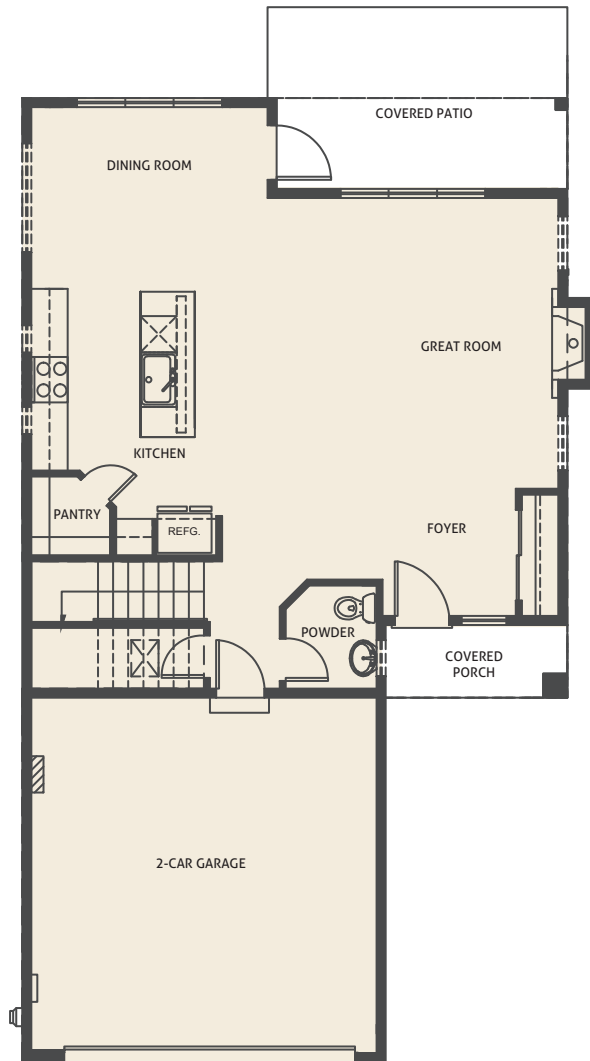
## RESIDENCE 9

  
3  
bedrooms

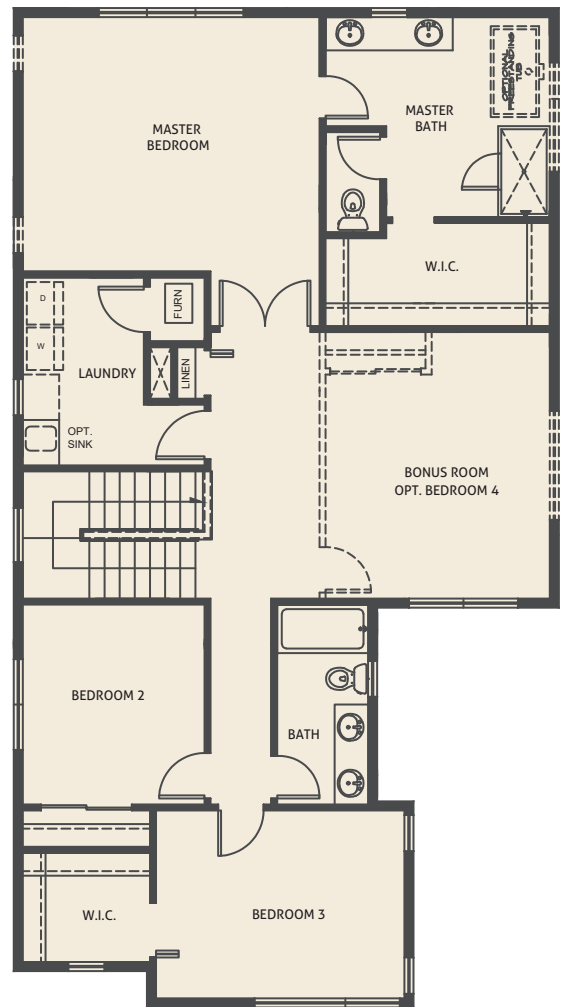
  
2.5  
bathrooms

  
2  
car garage

  
2,238  
sq. ft.



MAIN FLOOR



UPPER FLOOR

Plans and elevations are the artist's concept and not to scale. Ceiling heights, room sizes, window locations, bay windows, alcoves and dormers may change with each elevation. Square footages are estimates and are not warranted by seller. For clarification and additional information, please consult our sales representatives. (plan 3055)8.27.19

