



MEADOWLEAF

RESIDENCE **one**

with basement

4 Bedrooms
3.25 Bathrooms
2-Car Garage
2,918 sq. ft.



RESIDENCE one

with basement
2,918 sq.ft.

4 Bedrooms
3.25 Bathrooms
2-Car Garage

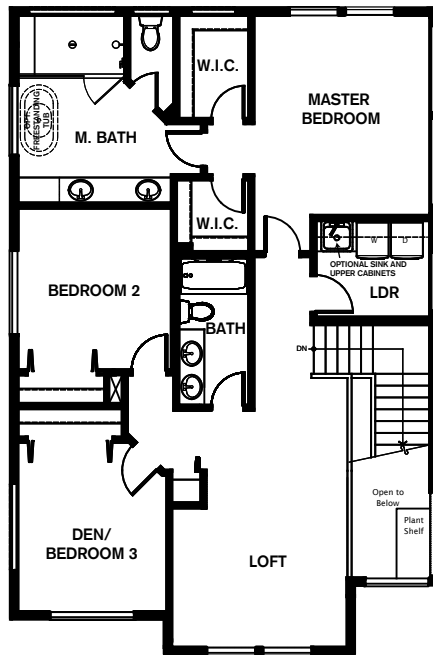
- + Recreation Room
- + Loft
- + Covered Deck
- + Pantry
- + Patio

Note: Windows, porches, and walls may vary due to exterior elevations. See agent for specific details.

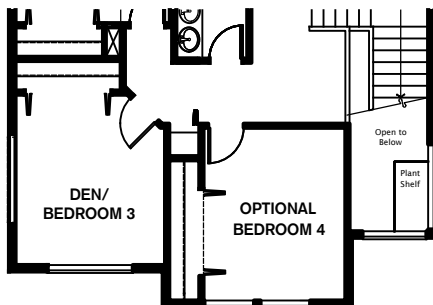
Optional Floorplan Features

- Laundry Room Sink
- Laundry Room Upper Cabinets
- Freestanding Tub in Master Bath
- Bedroom 4
- Sliding Glass Wall
- Wet Bar

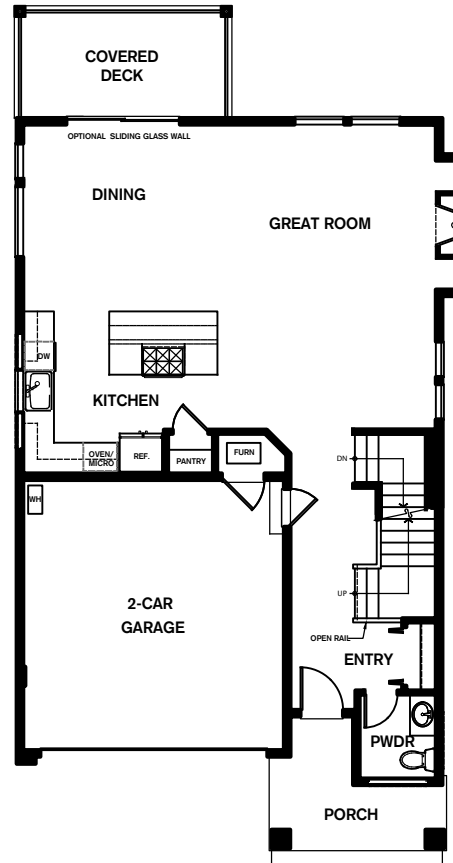
upper FLOORPLAN



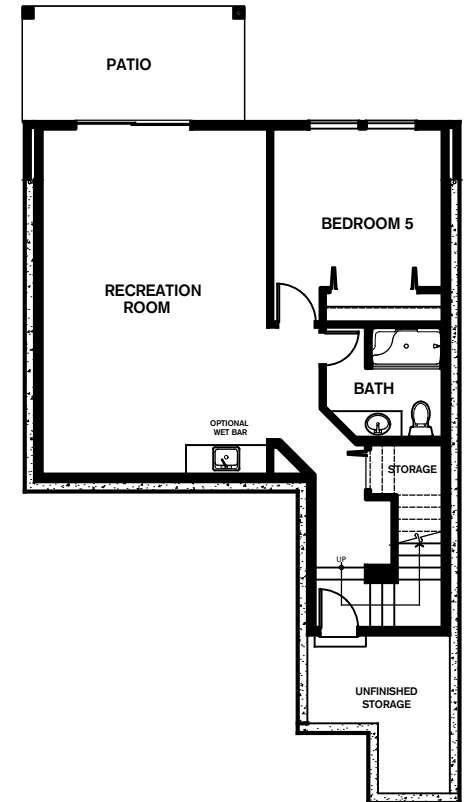
Optional Bedroom



middle FLOORPLAN



lower FLOORPLAN



Conner Homes reserves the right to make any modifications in price, materials, specifications, plans and designs without prior notice. Plans and elevations are artist's concept and not to scale. Ceiling heights, room sizes, window locations, bay windows, alcoves and dormers may change with each elevation. Square footages are estimates and are not warranted by the seller. For clarification and additional information, please consult our Sales Representative. (3059 | Elevation A - 2,924 sq. ft. | Elevation B - 2,918 sq. ft.) 8.28.18

