



MEADOWLEAF

RESIDENCE **ten**

4 Bedrooms
3.5 Bathrooms
2-Car Garage
3,541 sq. ft.



RESIDENCE ten

3,541 sq.ft.

- 4 Bedrooms
- 3.5 Bathrooms
- 2-Car Garage

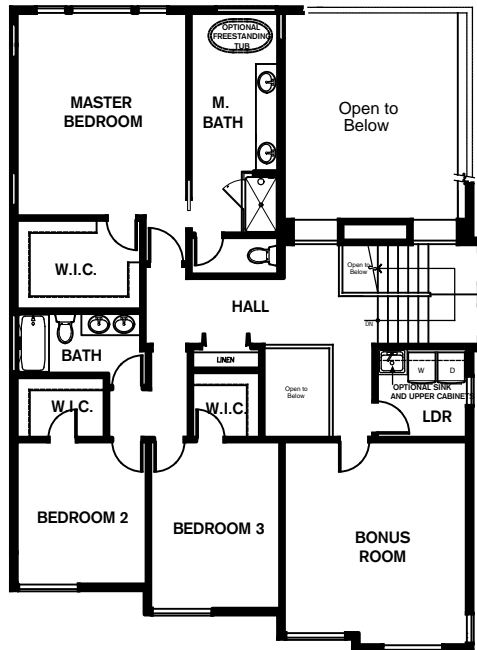
- + Recreation Room
- + Bonus Room
- + Den
- + Covered Deck
- + Pantry
- + Patio
- + Mudroom

Note: Windows, porches, and walls may vary due to exterior elevations. See agent for specific details.

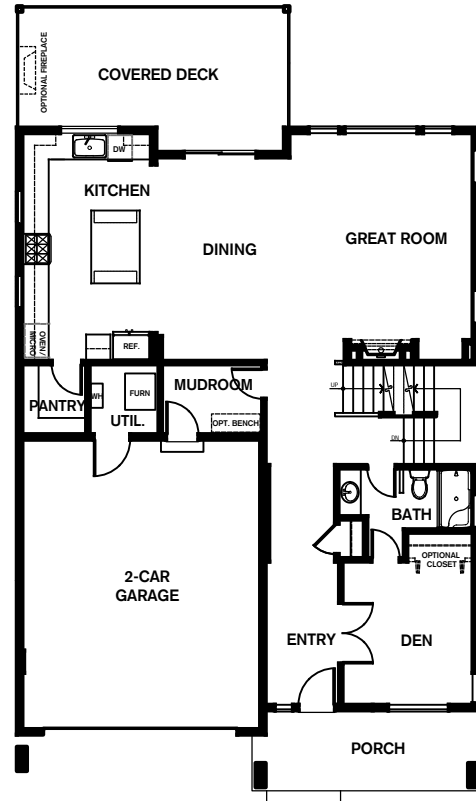
Optional Floorplan Features

- Freestanding Tub in Master Bath
- Laundry Room Sink
- Laundry Room Upper Cabinets
- Closet in Den
- Mudroom Bench
- Outdoor Fireplace
- Wet Bar

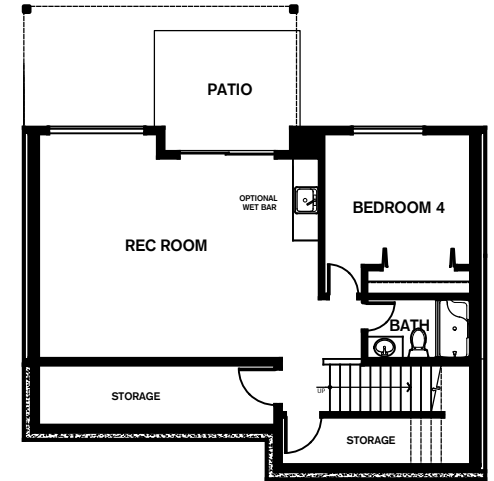
upper FLOORPLAN



middle FLOORPLAN



lower FLOORPLAN



Conner Homes reserves the right to make any modifications in price, materials, specifications, plans and designs without prior notice. Plans and elevations are artist's concept and not to scale. Ceiling heights, room sizes, window locations, bay windows, alcoves and dormers may change with each elevation. Square footages are estimates and are not warranted by the seller. For clarification and additional information, please consult our Sales Representative. (3953 | Elevation A - 3,541 sq. ft. | Elevation B - 3,543 sq. ft.) 5.24.18

