



MEADOWLEAF

## RESIDENCE **two**

4 Bedrooms  
2.75 Bathrooms  
2-Car Garage  
2,734 sq. ft.



elevation A



elevation B

# RESIDENCE **two**

2,734 sq.ft.

4 Bedrooms  
2.75 Bathrooms  
2-Car Garage

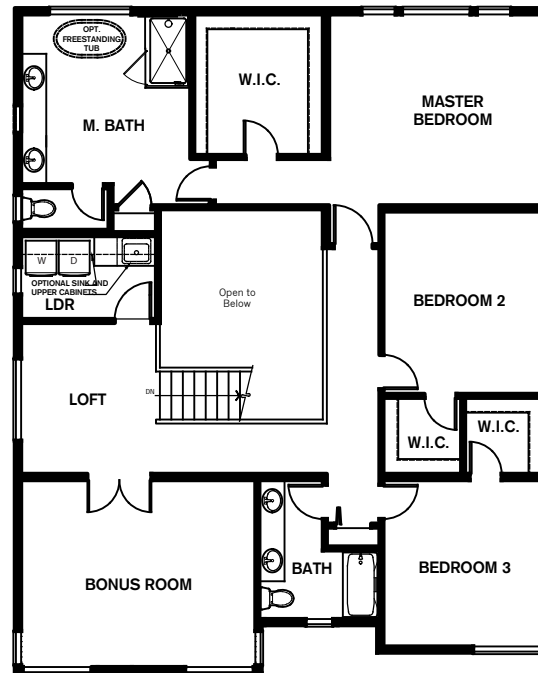
- + Bonus Room
- + Loft
- + Covered Patio
- + Pass-Thru Fireplace
- + Pantry
- + Mudroom

Note: Windows, porches, and walls may vary due to exterior elevations. See agent for specific details.

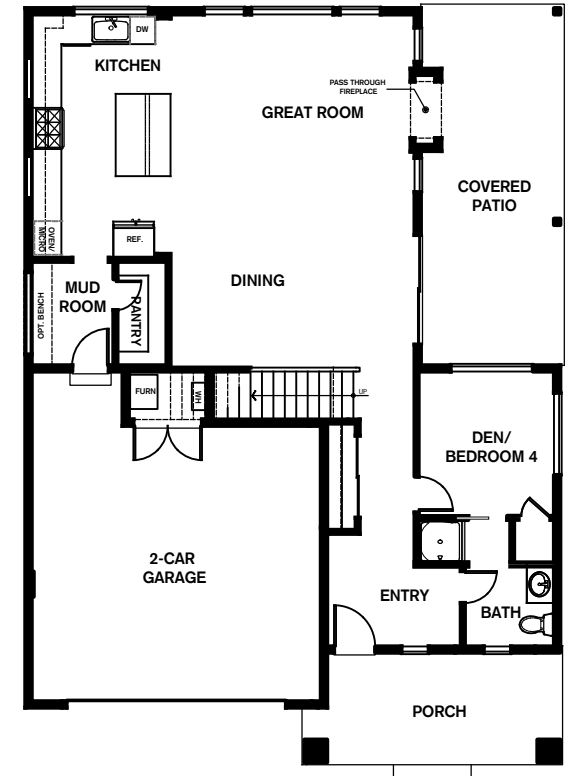
## Optional Floorplan Features

- Freestanding Tub in Master Bath
- Laundry Room Sink
- Laundry Room Upper Cabinets
- Mudroom Bench

upper FLOORPLAN



lower FLOORPLAN



Conner Homes reserves the right to make any modifications in price, materials, specifications, plans and designs without prior notice. Plans and elevations are artist's concept and not to scale. Ceiling heights, room sizes, window locations, sizes, doors, alcoves and dormers may change with each elevation. Square footages are estimates and are not warranted by the seller. For clarification and additional information, please consult our Sales Representative. (3932 - Elevation A - 2,723 sq. ft. | Elevation B - 2,734 sq. ft.) 6.1.18

