



MEADOWLEAF

RESIDENCE three
with basement

4 Bedrooms
3.5 Bathrooms
2-Car Garage
4,089 sq. ft.



elevation A



elevation B

RESIDENCE three

with basement

4,089 sq.ft.

4 Bedrooms

3.5 Bathrooms

2-Car Garage

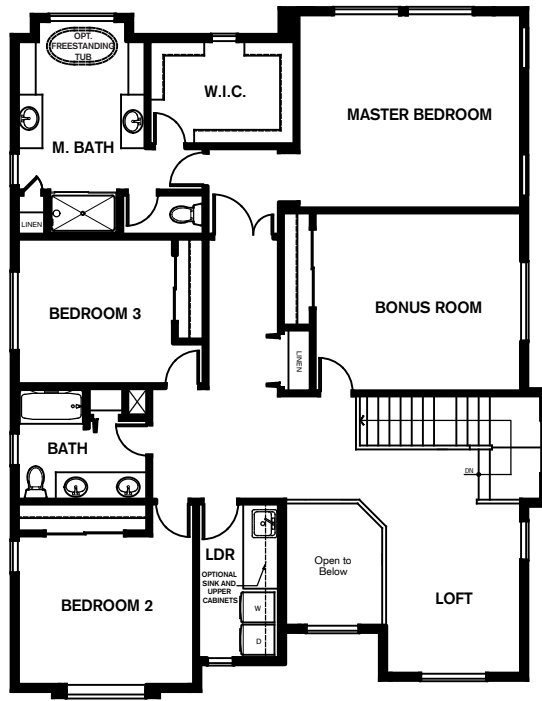
- + Bonus Room
- + Loft
- + Den
- + Pantry
- + Kitchen Nook
- + Covered Deck
- + Patio
- + Rec Room

Note: Windows, porches, and walls may vary due to exterior elevations. See agent for specific details.

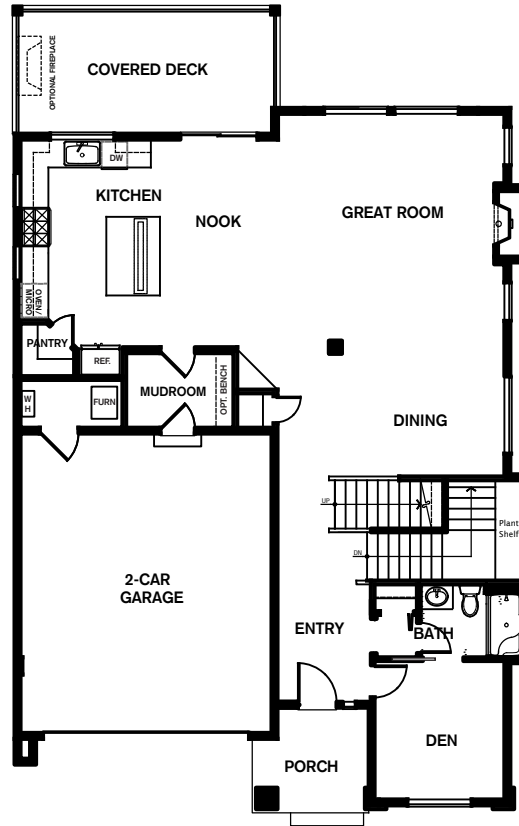
Optional Floorplan Features

- Freestanding Tub in Master Bath
- Laundry Room Sink
- Laundry Room Upper Cabinets
- Mudroom Bench
- Outdoor Fireplace
- Wet Bar

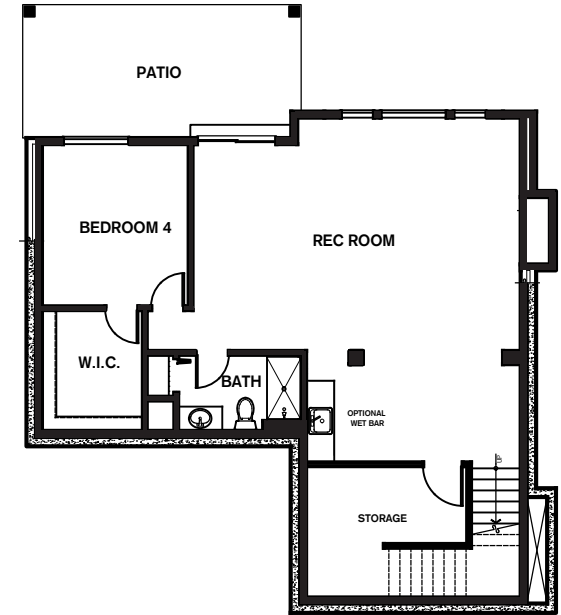
upper FLOORPLAN



middle FLOORPLAN



lower FLOORPLAN



Conner Homes reserves the right to make any modifications in price, materials, specifications, plans and designs without prior notice. Plans and elevations are artist's concept and not to scale. Ceiling heights, room sizes, window locations, bay windows, alcoves and dormers may change with each elevation. Square footages are estimates and are not warranted by the seller. For clarification and additional information, please consult our Sales Representative. (4054) 6.4.18

