



MEADOWLEAF

RESIDENCE **five**
with basement

6 Bedrooms
3.5 Bathrooms
3-Car Garage
4,551 sq. ft.



RESIDENCE five

with basement

4,551 sq.ft.

6 Bedrooms

3.5 Bathrooms

3-Car Garage

- + Bonus Room
- + Pantry
- + Kitchen Nook

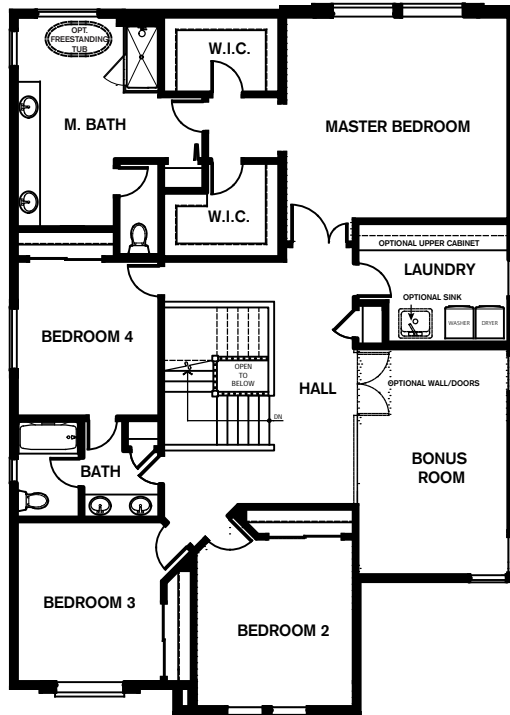
- + Covered Deck
- + Mudroom
- + Recreation Room

Note: Windows, porches, and walls may vary due to exterior elevations. See agent for specific details.

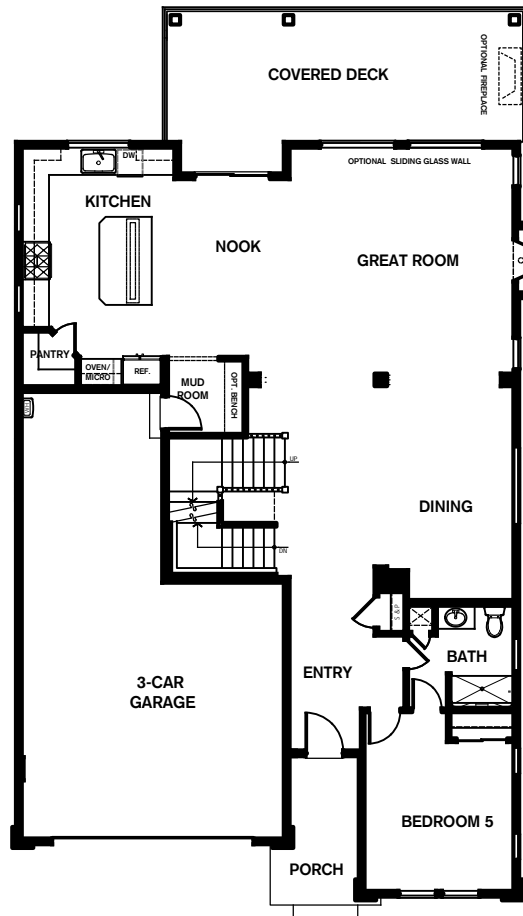
Optional Floorplan Features

- Bonus Room Wall/Doors
- Freestanding Tub in Master Bath
- Laundry Room Sink
- Laundry Room Upper Cabinets
- Outdoor Fireplace
- Sliding Glass Wall
- Mudroom Bench
- Wet Bar

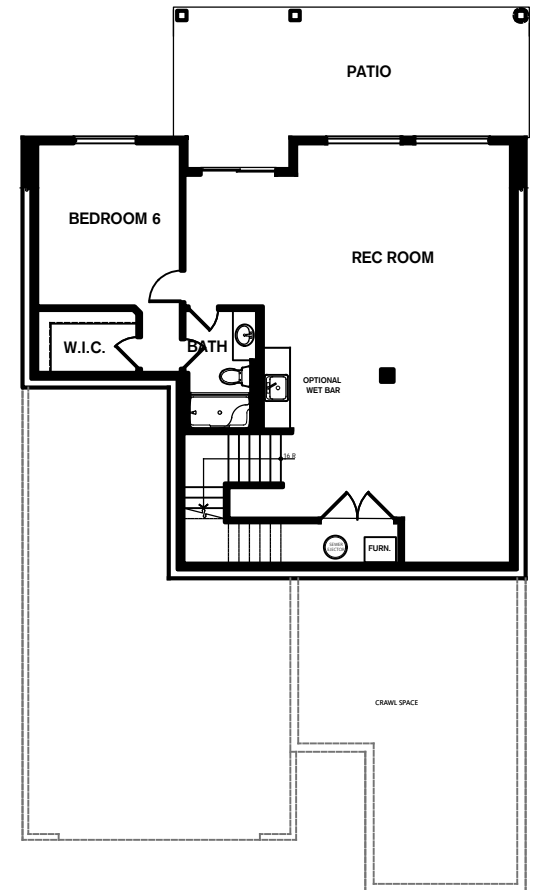
upper FLOORPLAN



middle FLOORPLAN



lower FLOORPLAN



Conner Homes reserves the right to make any modifications in price, materials, specifications, plans and designs without prior notice. Plans and elevations are artist's concept and not to scale. Ceiling heights, room sizes, window locations, bay windows, alcoves and dormers may change with each elevation. Square footages are estimates and are not warranted by the seller. For clarification and additional information, please consult our Sales Representative. 5.24.18

