



MEADOWLEAF

## RESIDENCE **seven**

5 Bedrooms  
3.75 Bathrooms  
3-Car Garage  
3,776 sq. ft.



# RESIDENCE seven

3,776 sq.ft.

- 5 Bedrooms
- 3.75 Bathrooms
- 3-Car Garage

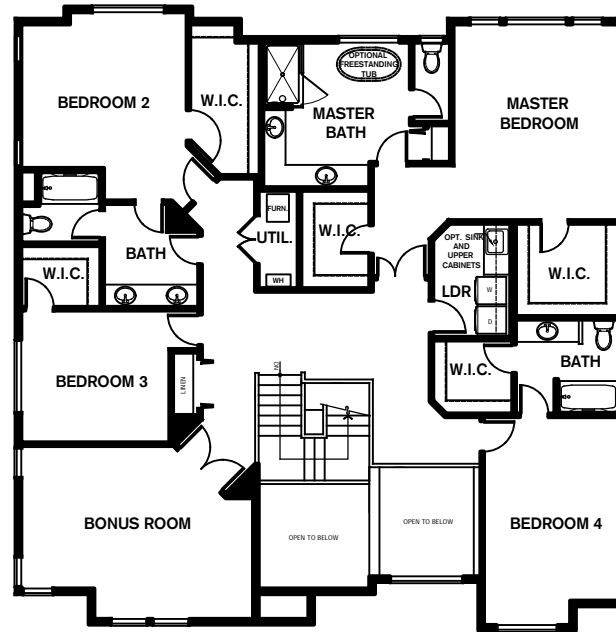
- + Den
- + Kitchen Nook
- + Covered Patio
- + Bonus Room
- + Butler's Pantry
- + Mudroom

Note: Windows, porches, and walls may vary due to exterior elevations. See agent for specific details.

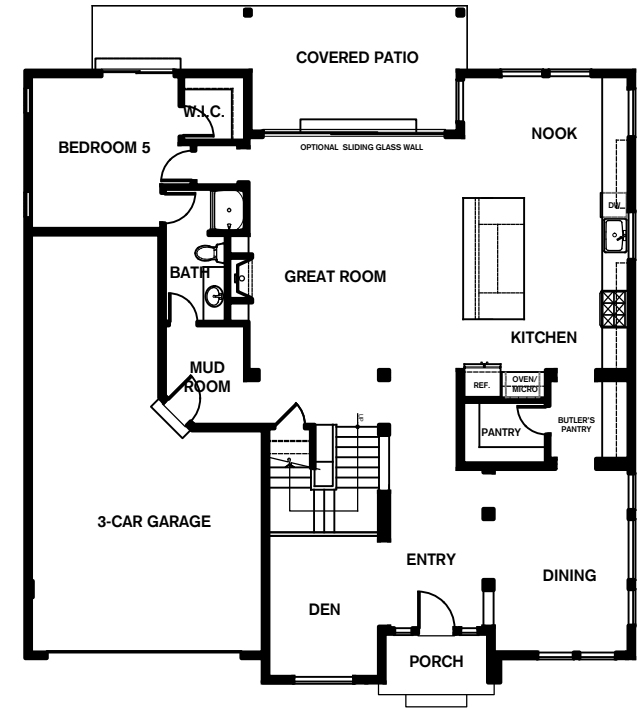
## Optional Floorplan Features

- Freestanding Tub in Master
- Laundry Room Sink
- Laundry Room Upper Cabinets
- Sliding Glass Wall

upper FLOORPLAN



lower FLOORPLAN



Conner Homes reserves the right to make any modifications in price, materials, specifications, plans and designs without prior notice. Plans and elevations are artist's concept and not to scale. Ceiling heights, room sizes, window locations, bay windows, alcoves and dormers may change with each elevation. Square footages are estimates and are not warranted by the seller. For clarification and additional information, please consult our Sales Representative. (5038 | Elevation A - 3,776 sq. ft. | Elevation B - 3,798 sq. ft. ) 4.24.18

